

## TECHNICAL DATA SHEET FOR E27M2 ON THE SK2731N / SK2731U STAND

### Full Size Manual / Electric Convection Oven on a Stainless Steel Stand

#### STANDARD FEATURES

- 2 18" x 26" / 460 x 660 full size sheet pan capacity
- 2 600 x 400 tray capacity
- 115mm tray spacing
- Compact 810mm width
- Bi-directional reversing fan system
- 2.8kW heating power
- 13A plug-in cordset fitted
- Vitreous enamel oven chamber
- Plug-in continuous oven door seal
- Safe-Touch vented drop down door
- Stay-Cool door handle
- Heavy-duty door hinges
- Easy clean door glass system
- Mechanical thermostat 50-260°C
- 60 minute timer with time up alarm
- Dual halogen oven lamps
- Dia. 180mm full stainless steel oven fan
- Anti-skid 50mm dia. 76mm high adjustable stainless steel feet
- 2 oven wire racks supplied
- 100% recyclable packaging

#### ACCESSORIES

- Turbofan SK2731N Oven Stand  
suits 600 x 400 trays and GN 1/1 pans
- Turbofan SK2731U Oven Stand  
suits 26" x 18" / 660 x 460 pans



**E27M2** Unit shall be a Blue Seal electrically heated Turbofan convection oven. The oven shall have a one piece vitreous enamel oven chamber, stainless top and sides and safe touch vented easy clean drop down door. Oven shall have capacity for two full size sheet pans. The oven shall have 2.8kW heating elements. The oven shall have a bi-directional single reversing fan system. The oven shall be controlled by a mechanical thermostat with a range of 50-260°C, a 60 minute bake timer, and feature dual halogen oven lamps. Oven shall be able to be bench mounted on 76mm feet or mounted on oven stand models SK2731N or SK2731U. Oven shall be fitted with a 13A plug-in cordset. Unit shall be supplied in 100% recyclable shipping packaging.

**SK2731N** Unit shall be a Blue Seal Turbofan stainless steel oven stand. The stand shall be constructed from stainless steel tube with castors, with front castors having dual swivel and wheel locks. It shall be fitted with 6 tray runners suitable for up to 600 x 400 trays and GN 1/1 pans. The stand shall be fully compatible with, and support, Turbofan Convection Oven models E27M2, E27M3, E28M4, and E31D4. Unit shall be supplied in 100% recyclable shipping packaging.

**SK2731U** Unit shall be a Blue Seal Turbofan stainless steel oven stand. The stand shall be constructed from stainless steel tube with castors, with front castors having dual swivel and wheel locks. It shall be fitted with 6 tray runners suitable for up to 12 half size sheet pans or 6 full size sheet pans. The stand shall be fully compatible with, and support, Turbofan Convection Oven models E27M2, E27M3, E28M4, and E31D4. Unit shall be supplied in 100% recyclable shipping packaging.

### E27M2 Full Size Manual / Electric Convection Oven on a Stainless Steel Stand

#### CONSTRUCTION

Vitreous enamel fully welded oven chamber  
 Stainless steel front, sides and top exterior  
 Stainless steel oven fan baffle and oven vent  
 Removable 2 position chrome plated wire side racks  
 Oven racks chrome plated wire (2 supplied)  
 Stainless steel frame drop down hinged door  
 5mm thick door outer glass  
 5mm thick low energy loss door inner glass  
 Heavy-duty counterbalanced door hinges  
 Wear resistant powder coated welded door handle  
 Stainless steel control panel  
 Aluminised coated steel base and rear panels

#### CONTROLS

Power ON control panel indicator  
 Mechanical thermostat 50-260°C  
 Heating ON control panel indicator  
 Manual 60 minute timer  
 Time-Up control panel indicator and buzzer  
 Over-temperature safety cut-out

#### CLEANING

Stainless steel top and sides continuous exterior panel  
 Vitreous enamel oven chamber  
 Fully removable chrome plated oven side racks  
 Removable stainless steel oven fan baffle  
 Full stainless steel oven fan  
 Easy clean door system with hinge out door inner glass (no tools required)  
 Removable plug-in oven door seal (no tools required)  
 76mm high stainless steel feet for easy access underside

#### SPECIFICATIONS

Electrical Requirements  
 230-240V, 50Hz, 1P+N+E, 3kW, 12A  
 13A cordset fitted

#### External Dimensions

Width 810mm  
 Height 607mm including 76mm feet  
 Depth 762mm

#### Oven Internal Dimensions

Width 695mm  
 Height 305mm  
 Depth 470mm  
 Volume 0.10m<sup>3</sup>

#### Oven Rack Dimensions

Width 660mm  
 Depth 460mm

Nett Weight (E27M2)  
 60.2kg

#### Packing Data (E27M2)

77.8kg  
 0.55m<sup>3</sup>  
 Width 870mm  
 Height 755mm  
 Depth 835mm

### SK2731N / U Stainless Steel Stand

All stainless steel welded frame oven stand for Turbofan E27, E28 and E31 Series model ovens  
 6 position tray runners standard  
 76mm diameter wheel swivel castors standard with 2 front castors with dual swivel and wheel  
 Welded 38mm and 32mm square tube front and rear frames  
 Welded rack supports/side frames  
 4 dia. 6mm swivel castors with 2 front castors dual wheel and swivel lock  
 Top frame oven supports suit Turbofan E27, E28 and E31 Series oven mounting  
 Supplied CKD for assembly on site

#### External Dimensions (SK2731N / U Oven Stand)

Width 810mm  
 Height 880mm  
 Depth 650mm

Nett Weight (SK2731N / U Oven Stand)  
 19.5kg

#### Packing Data (SK2731N / U Oven Stand)

22kg  
 0.11m<sup>3</sup>  
 Width 830mm  
 Height 900mm  
 Depth 152mm

### BLUE SEAL

www.blue-seal.co.uk  
 www.bluesealequipment.com  
 www.turbofanoven.com

#### United Kingdom Blue Seal Limited

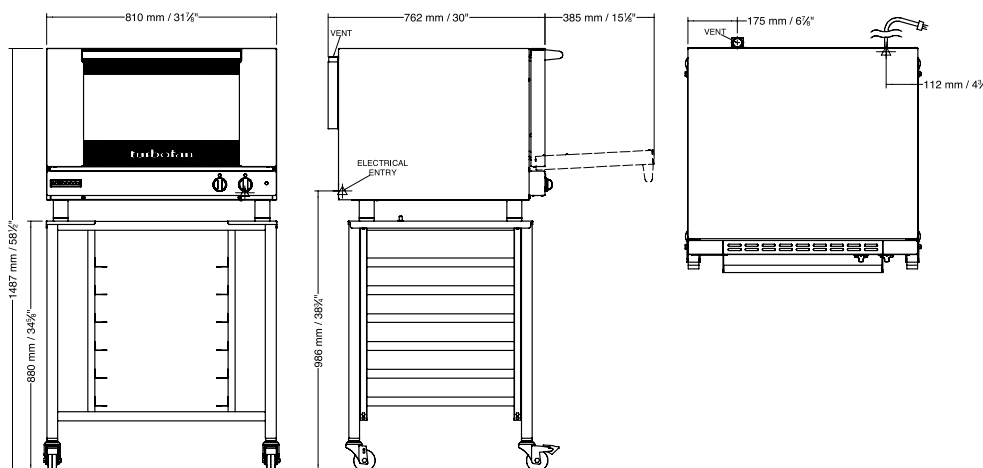
Unit 67  
 Gravelly Business Park  
 Gravelly  
 Birmingham B24 8TQ  
 England  
 Telephone 0121-327 5575  
 Facsimile 0121-327 9711  
 sales@blue-seal.co.uk  
 www.blue-seal.co.uk  
 www.bluesealequipment.com

#### Australia Moffat Pty Limited

740 Springvale Road  
 Mulgrave, Victoria 3170  
 Australia  
 Telephone 03-9518 3888  
 Facsimile 03-9518 3833  
 vsales@moffat.com.au  
 www.moffat.com.au

#### New Zealand Moffat Limited

16 Osborne Street  
 PO Box 10-001  
 Christchurch 8011  
 Telephone 03-389 1007  
 Facsimile 03-389 1276  
 sales@moffat.co.nz



Designed and manufactured by  
**MOFFAT**

ISO9001  
 All Turbofan products are designed and manufactured by Moffat using the internationally recognised ISO9001 quality management system, covering design, manufacture and final inspection, ensuring consistent high quality at all times.

In line with policy to continually develop and improve its products, Moffat Limited reserves the right to change specifications and design without notice.



© Copyright Moffat Ltd  
 Moffat 6.10

